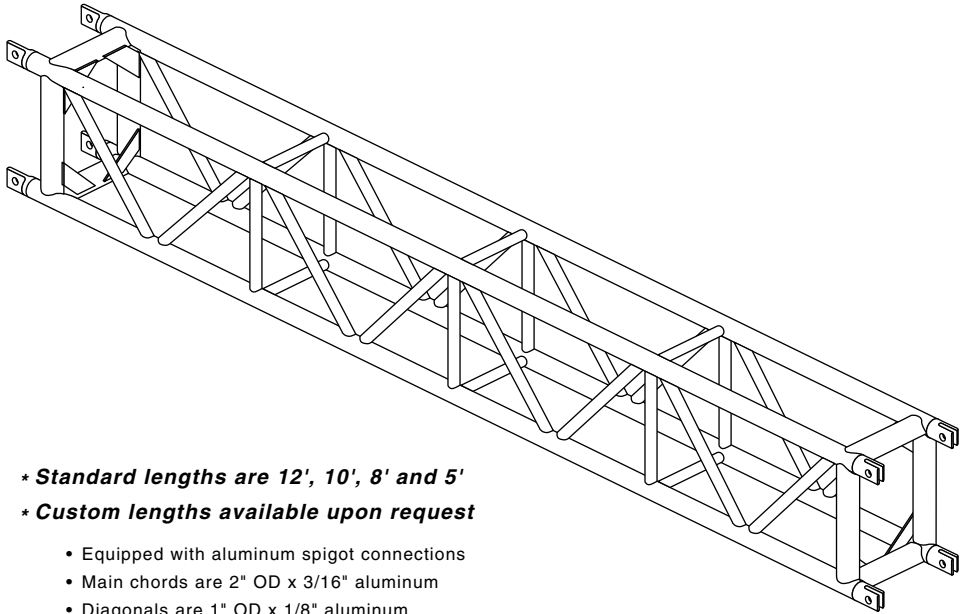


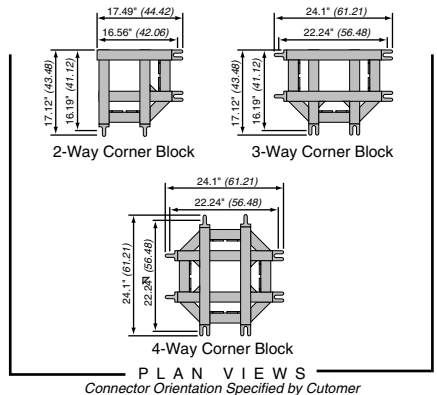
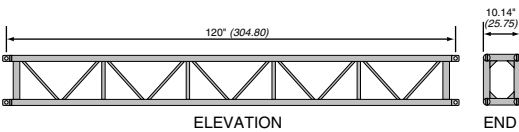
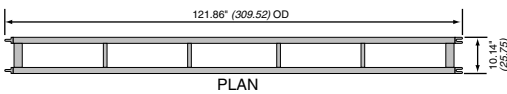


STAGING, LIGHTING AND SUPPORT SYSTEMS

**SUPER BEAM
TRUSS
13.7" x 10" SPIGOTED**



- * **Standard lengths are 12', 10', 8' and 5'**
- * **Custom lengths available upon request**
 - Equipped with aluminum spigot connections
 - Main chords are 2" OD x 3/16" aluminum
 - Diagonals are 1" OD x 1/8" aluminum
 - Fabricated by certified welders



ALLOWABLE LOAD DATA

SUPER BEAM TRUSS 13.7" x 10" SPIGOTED

Span ft. (mtrs)	MAXIMUM ALLOWABLE UNIFORM LOADS			MAXIMUM ALLOWABLE POINT LOADS					
				CENTER POINT		THIRD POINT		QUARTER POINT	
Load #/ft.	Load lbs (kgs)	Max Defl. in.	Load lbs (kgs)	Max Defl. in.	Load lbs (kgs)	Max Defl. in.	Load lbs (kgs)	Max Defl. in.	
<i>Spigots Only</i>									
10 (3.05)	766	7660 (3475)	0.15	3831 (1738)	0.12	2873 (1303)	0.16	1916 (869)	0.15
20 (6.09)	186	3720 (1687)	0.61	1863 (845)	0.49	1397 (634)	0.63	932 (423)	0.58
30 (9.14)	78	2340 (1061)	1.36	1184 (537)	1.12	888 (403)	1.41	592 (269)	1.32
40 (12.21)	41	1640 (744)	2.44	827 (375)	2.03	620 (281)	2.50	413 (187)	2.35

Note: Deflections reported in the above tables are maximum expected for full loadings (indoors only).

All loads are based on 10'-0" sections. Other section lengths are available.

Load tables are reprinted from engineering reports developed by Parkhill, Smith & Cooper, Inc., structural engineers, and apply to truss fabricated after December, 1989.

SUPER BEAM TRUSS 13.7" x 10" SPIGOTED

Connections are aluminum spigots & 5/8" clevis pins

Product Description	Item Code	Weight lbs (kgs)
5' SUPER BEAM TRUSS	TRS 1310-060S	44 (20)
8' SUPER BEAM TRUSS	TRS 1310-096S	64 (29)
10' SUPER BEAM TRUSS	TRS 1310-120S	77 (35)
12' SUPER BEAM TRUSS	TRS 1310-144S	88 (40)
SUPER BEAM 2-WAY CORNER BLOCK	TRS 1310-C2S	27 (12)
SUPER BEAM 3-WAY CORNER BLOCK	TRS 1310-C3S	38 (17)
SUPER BEAM 4-WAY CORNER BLOCK	TRS 1310-C4S	46 (21)
3/4" CLEVIS PIN	HDW CP-75	.4 (.18)
MEDIUM R-CLIP	HDW RC-MED	-