

TRAILER

SPECIFICATIONS

| | | |
|---------------------|---------------------|-----------------------|
| Length | 53' | 16.15 m |
| Width | 8' 2" | 2.49 m |
| Height | 13' 5" | 4.09 m |
| Storage Space | 38' x 4' 6" x 7' 4" | 11.60 x 1.40 x 2.20 m |
| Storage Compartment | 10" x 13" x 42" | 0.25 x 0.33 x 1.10 m |
| Storage Capacity | 5000 lb | 2268 kg |
| Weight | 42100 lb | 19100 kg |

STAGE FLOOR

| | | |
|---|------------------------|-----------------------|
| Length and Depth | 40' x 39' 2" | 12.20 x 11.94 m |
| Length and Depth with Extension Platforms | 64' x 39' 2" | 19.51 x 11.94 m |
| Height from Ground | 3' 6" to 6' | 1.07 to 1.83 m |
| Design Live Load | 100 lb/ft ² | 490 kg/m ² |
| Type of Surface | Plywood on steel | |

ROOF

| | | |
|--|----------------------------|-----------------------|
| Length and Depth | 42' 4" x 40' 9" | 12.91 x 12.43 m |
| Clearance (Inclined roof) | 22' 9" to 25' 5" | 6.93 to 7.76 m |
| Maximum Height from Banners | 32' 4" | 9.86 m |
| Type of Surface | Fibreglass bonded on steel | |
| Load Bearing Capacity † | 26000 lb | 11793 kg |
| 4 Rigging Points | 2000 lb each | 907 kg each |
| 12 Rigging Points | 1000 lb each | 454 kg each |
| 8 Rigging Points | 500 lb each | 227 kg each |
| 2 Trusses - Central Roof (T1) | 3000 lb each | 1360 kg each |
| 2 Trusses - Downstage and Upstage (T2) | 2000 lb each | 907 kg each |
| 2 Lateral Overhang Rigging Points | 2000 lb each at 6' | 907 kg each at 1.83 m |
| 2 Bi-directional Rigging Beams * | 4000 lb | 1814 kg |

PRACTICAL ASPECTS

| | |
|---|--|
| Installation Time once Levelling Complete | 2.5 Hours - Less without windwalls |
| Personnel Required | 1 Certified technician and 3 stagehands |
| Site Preparation | None |
| Heavy Machinery Required | None |
| Mode of Transportation | 1 Fifth-wheel tractor |
| Gust Wind Resistance | 60 mph (97 km/h) with windwall or 90 mph (145 km/h) without windwall |
| Promotional Visibility * | Rolling billboard or multiple banner options |
| Windwalls * | Weatherproof, fire-retardant vinyl or scrim (blow-through material) |
| Vertical Banner Supports * | Quick to install - Offers close to 834 sqft. (77.5 m ²) of promotional space |
| Floor Extension Platforms * | Integrated brackets - easy to install |

Values indicated are nominal. Due to STAGELINE'S product improvement policy, technical specifications may change without notice.
 † Please refer to rigging plan.
 * Offered in option.

450 589-1063

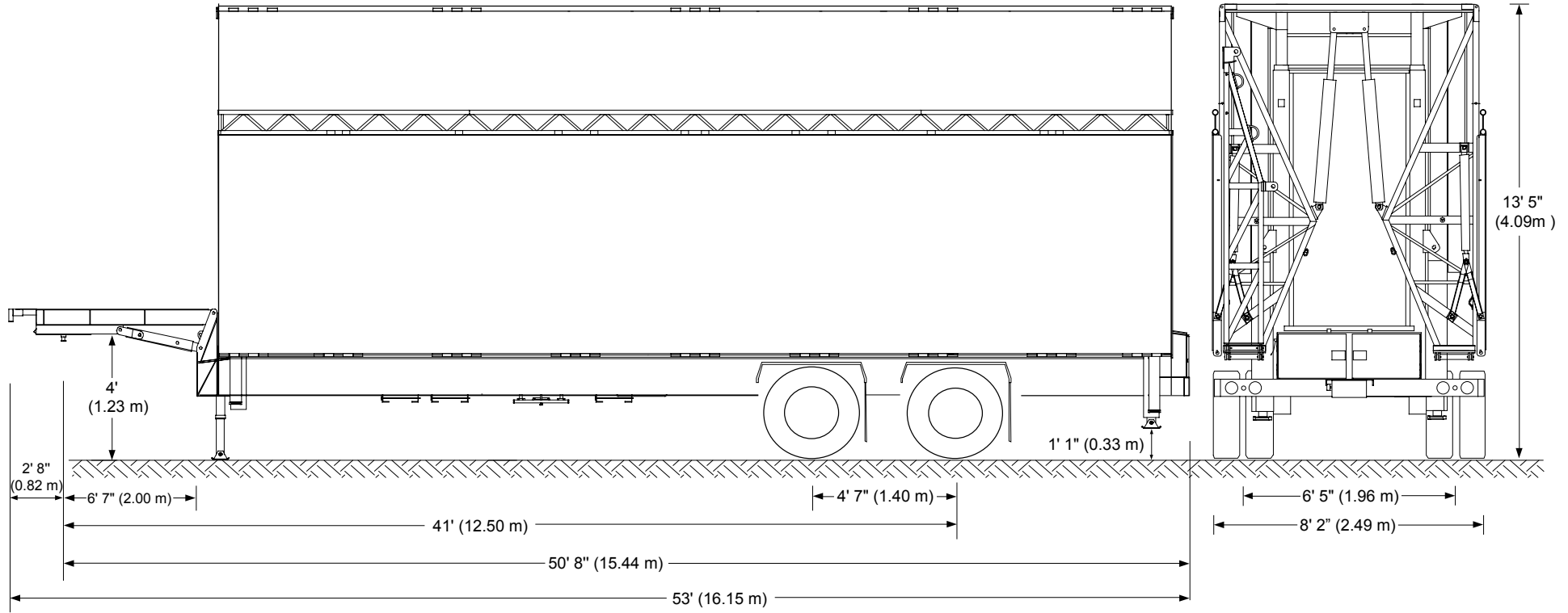
Fax: 450 589-1711

1-800-267-8243 in N.A.

info@stageline.com

www.stageline.com

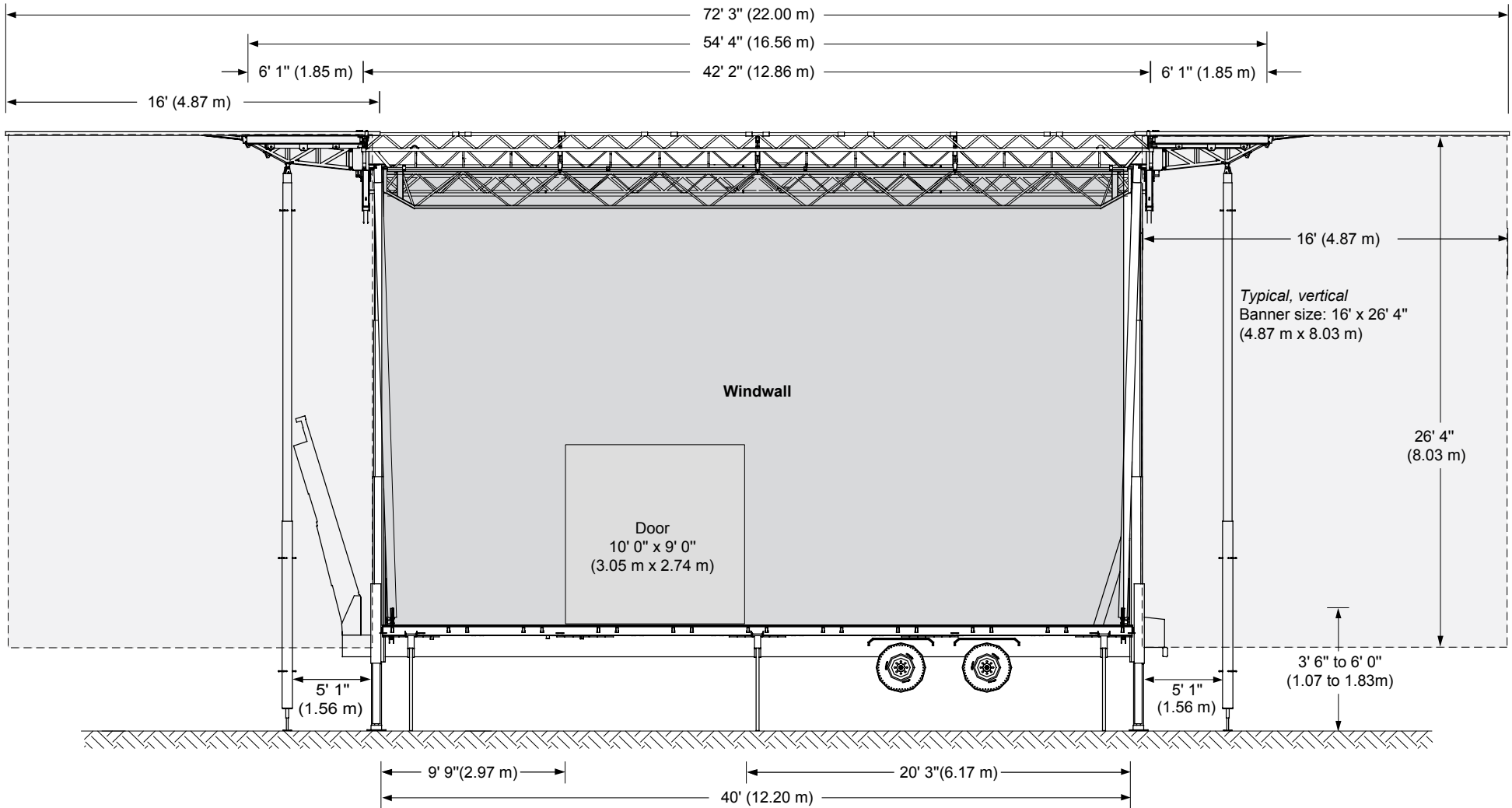
Stageline SL 320



| Mass | Unladen | | Laden | |
|-----------------------------|---------|--------|--------|--------|
| | Lb | Kg | Lb | Kg |
| Total Mass | 42 100 | 19 100 | 47 100 | 21 360 |
| Mass on Axle | 33 800 | 15 330 | - | - |
| Allowable Load on Axle | - | - | 34 000 | 15 420 |
| Mass on Gooseneck | 8 300 | 3 770 | - | - |
| Allowable Load on Gooseneck | - | - | - | - |

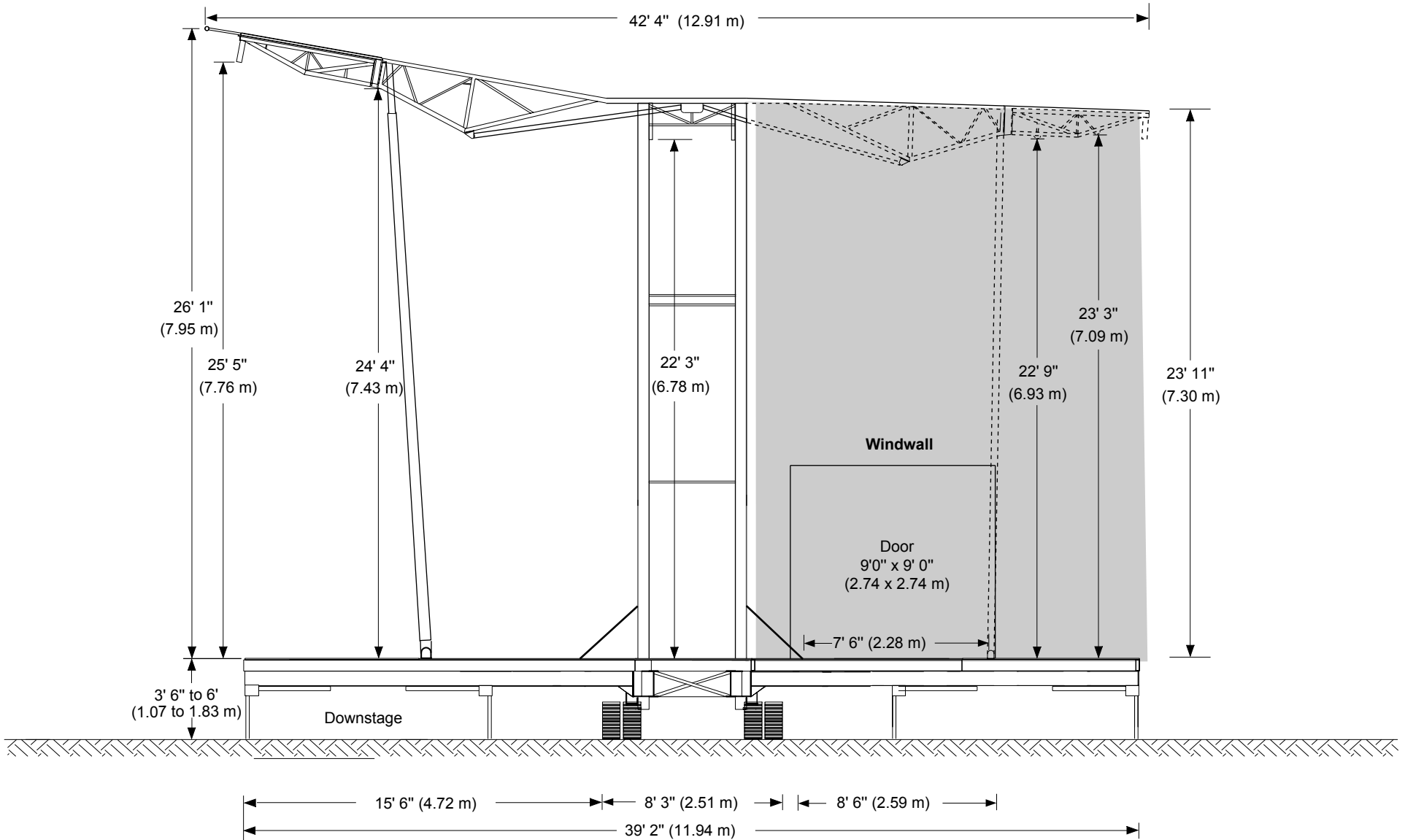
Mass & Dimensions

Stageline SL 320



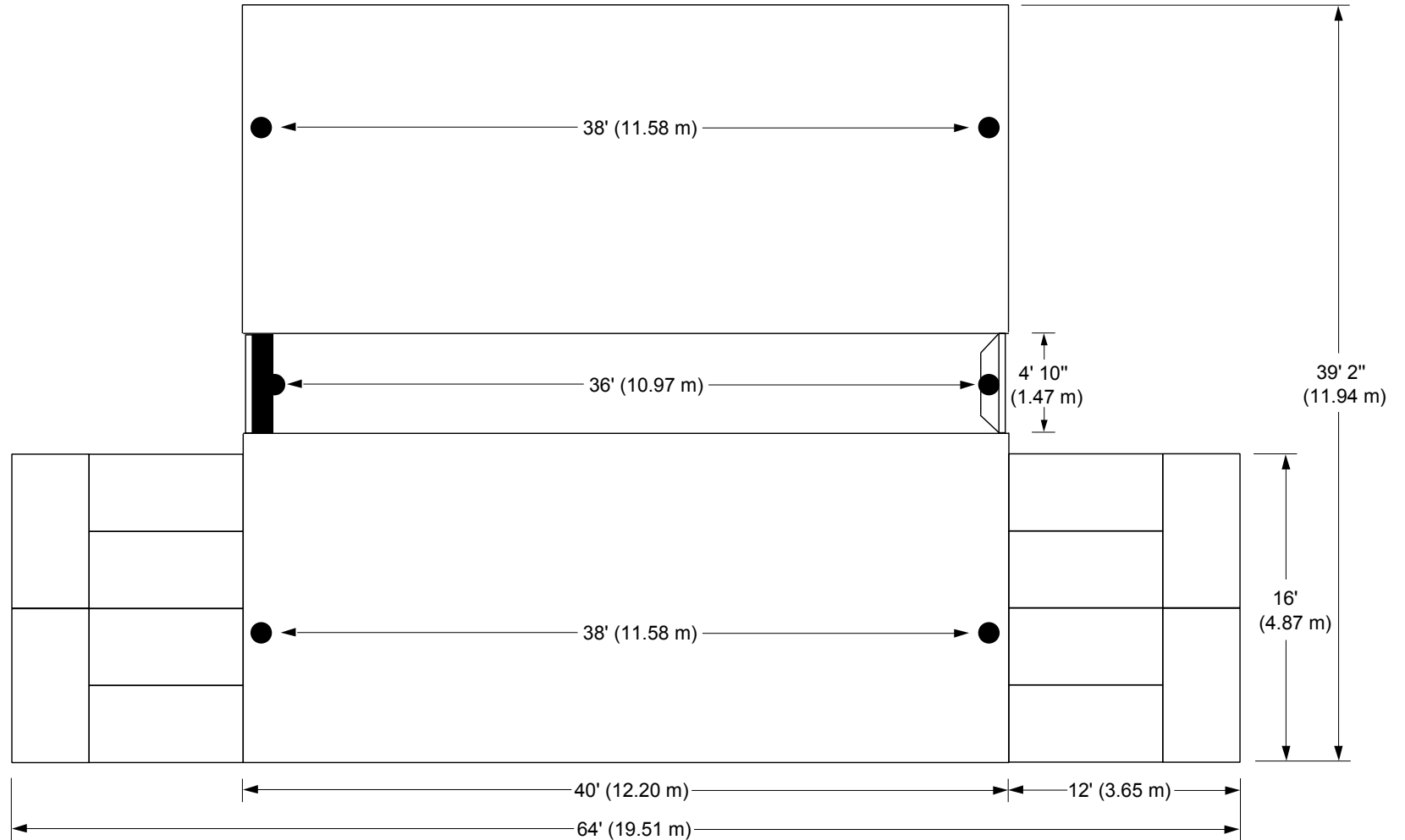
Front View with Windwall and Banner

Stageline SL 320



Side View with Windwall

Stageline SL 320



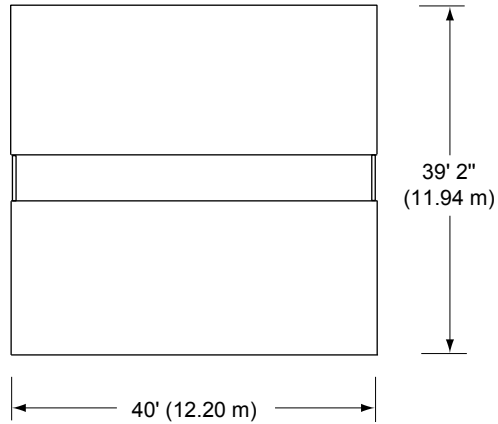
Downstage

Capacity: 100 lb/ft² (490 kg/m²)

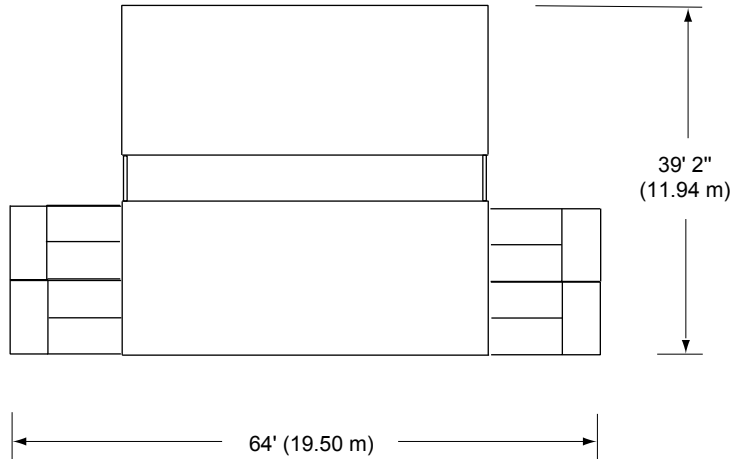
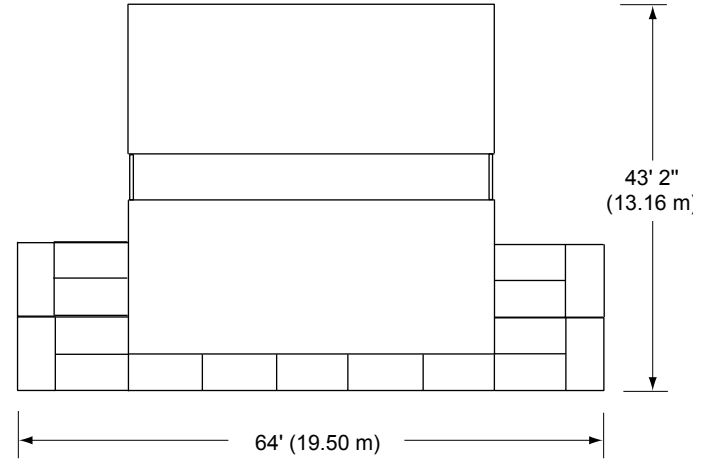
Floor View

Stageline SL 320

Standard



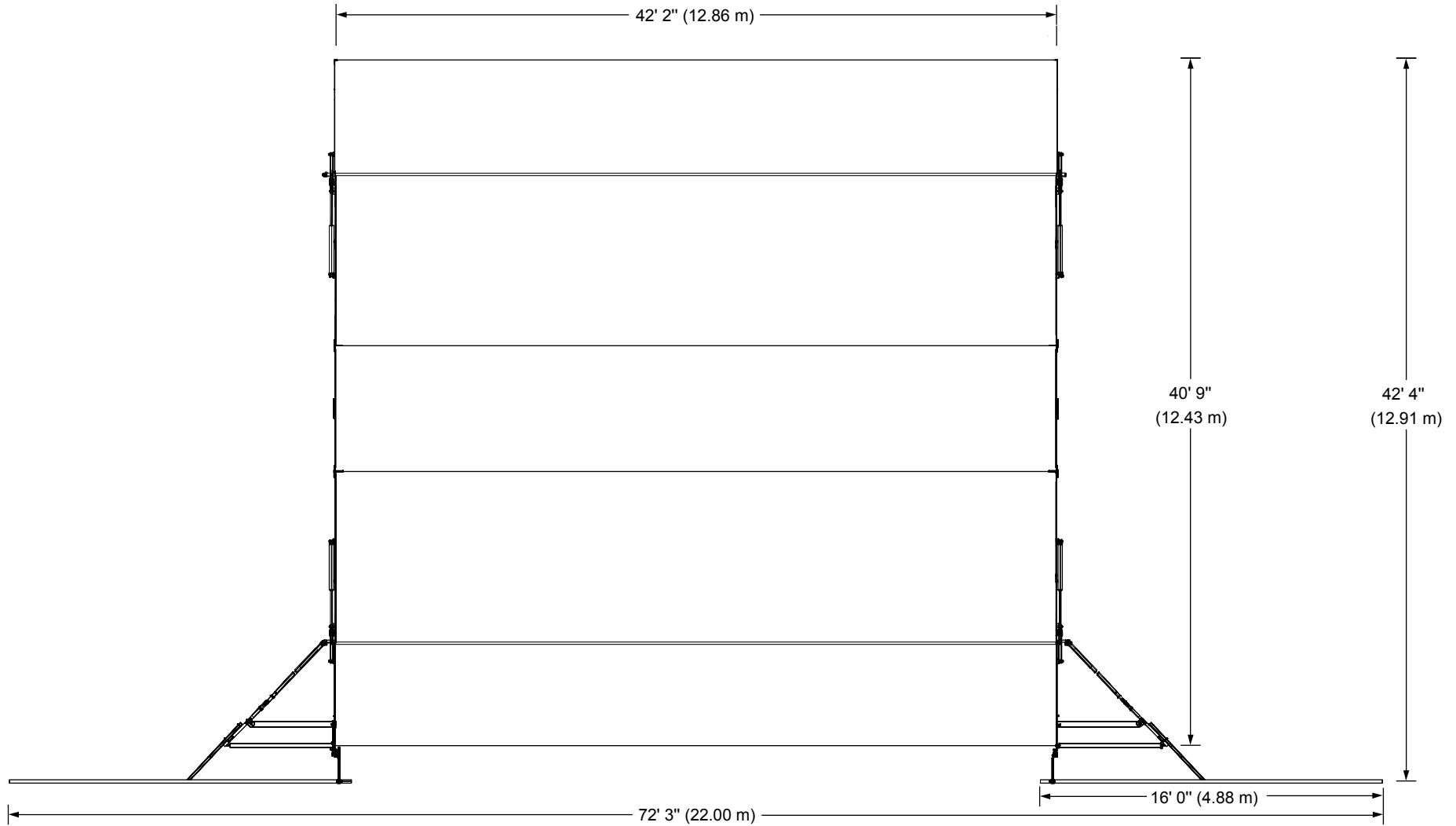
Other Available Configurations



□ = 4' x 8' (1.22 m x 2.44 m)
N.B. One guardrail per 4' (1.22 m)

Extension Platform Layouts

Stageline SL 320



Roof View with Banner

A thorough understanding of the inter-related loadings shown in this rigging plan is needed in order to safely use this mobile stage roof and to take full advantage of the many rigging opportunities it offers.

This mobile stage roof offers a variety of rigging options with regard to load capacity, placement and type.

There are trusses, rigging pipes, front overhang rigging pipes, side overhang rigging beams, line array rigging beams and roof rigging points.

This rigging plan locates and defines these rigging features, includes load capacity for each and describes maximum combinations of loads amongst features.

Take note of exclusions, maximum sub-totals in a group, load balance requirements, maximum lifting capacity of roof and maximum rigging load on roof.

The maximum load on the roof is less than the sum of the maximum load on each rigging feature.

RIGGING RESTRICTIONS

Use both P1s or P2s or P3s, P4s or P5 alone on each T1 truss.

Use both P6s or P7s or P8s or P9 alone on each T2 truss.

Do not load more than 1000 lb (454 kg) on each twin set of P10 in upstage roof panel.

Do not load more than 500 lb (227 kg) on each twin set of P11.

Do not load P11 concurrently with truss T2 or when windwalls are installed.

Do not load P12s concurrently with P13 to P15.

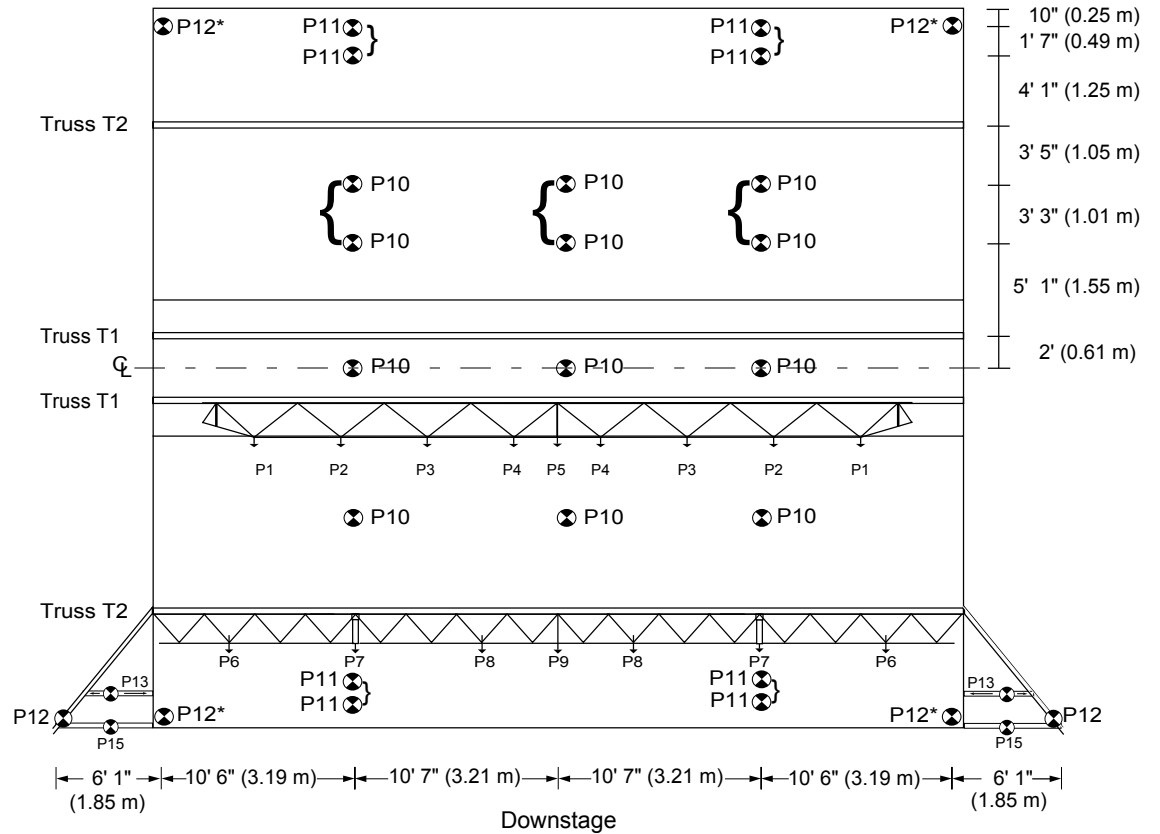
P12*s can not exceed 1000 lb when windwalls are installed.

Total load of P12s to P15 must not exceed 4000 lb (1814 kg).

If installing banner rigging bars, total load of P12s to P15 must not exceed 3000 lb (1360 kg).

Note:

Outside diameter of rigging bars and of lower chord of trusses is 2" (5 cm).



Maximum Load Bearing Capacity - 16000 lb (7257 kg)

| Rigging Point Maximum Load Capacity | | |
|-------------------------------------|------|------|
| Point No. | Lb | Kg |
| P15 (See rigging restrictions) | 4000 | 1814 |
| P12 | 2000 | 908 |
| P1 & P2 | 1500 | 680 |
| P3 | 1200 | 544 |
| P6, P10 & P13 | 1000 | 454 |
| P4 & P5 | 700 | 318 |
| P7 | 650 | 295 |
| P11 | 500 | 227 |
| P8 & P9 | 400 | 182 |

Rigging Plan - Unit No. 271 and down

Stageline SL 320

A thorough understanding of the inter-related loadings shown in this rigging plan is needed in order to safely use this mobile stage roof and to take full advantage of the many rigging opportunities it offers.

This mobile stage roof offers a variety of rigging options with regard to load capacity, placement and type.

There are trusses, rigging pipes, front overhang rigging pipes, side overhang rigging beams, line array rigging beams and roof rigging points.

This rigging plan locates and defines these rigging features, includes load capacity for each and describes maximum combinations of loads amongst features.

Take note of exclusions, maximum sub-totals in a group, load balance requirements, maximum lifting capacity of roof and maximum rigging load on roof.

The maximum load on the roof is less than the sum of the maximum load on each rigging feature.

RIGGING RESTRICTIONS

Use both P1s or P2s or P3s, P4s or P5 alone on each T1 truss.

Use both P6s or P7s or P8s or P9 alone on each T2 truss.

Do not load more than 1000 lb (454 kg) on each twin set of P10 in upstage roof panel.

Do not load more than 500 lb (227 kg) on each twin set of P11.

Do not load P11s concurrently with truss T2 or when windwalls are installed.

Do not load P12s concurrently with P13 to P15.

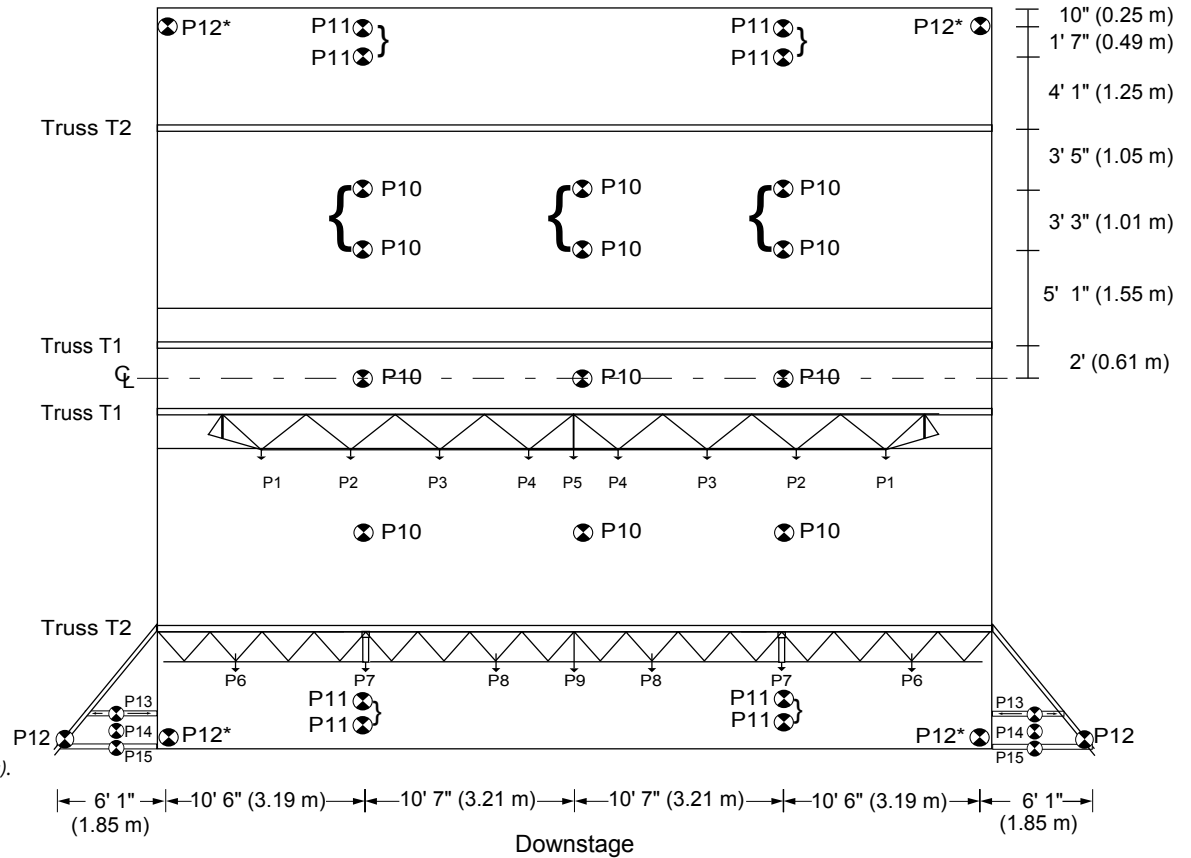
P12*s can not exceed 1000 lb when windwalls are installed.

Total load of P12s to P15 must not exceed 4000 lb (1814 kg).

If installing banner rigging bars, total load of P12s to P15 must not exceed 3000 lb (1360 kg).

Note:

Outside diameter of rigging bars and of lower chord of trusses is 2" (5 cm).

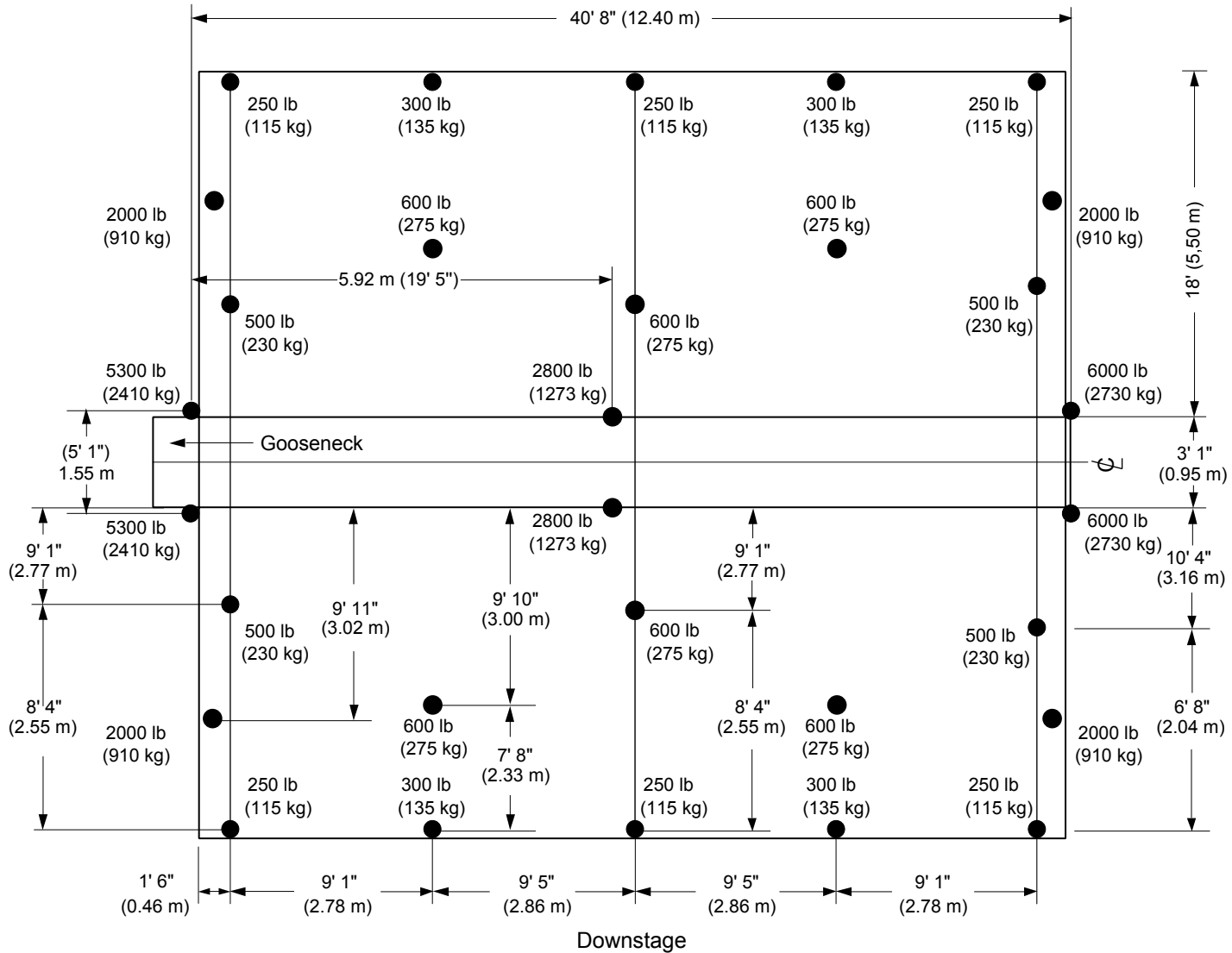


Maximum Load Bearing Capacity - 26000 lb (11793 kg)

| Rigging Point Maximum Load Capacity | | |
|-------------------------------------|------|------|
| Point No. | Lb | Kg |
| P13, P14 & P15 | 4000 | 1814 |
| P12 | 2000 | 907 |
| P1 & P2 | 1500 | 680 |
| P3 | 1200 | 544 |
| P6 & P10 | 1000 | 454 |
| P4 & P5 | 700 | 318 |
| P7 | 650 | 295 |
| P11 | 500 | 227 |
| P8 & P9 | 400 | 182 |

Rigging Plan - Unit No. 272 and up

Stageline SL 320



● : Floor stabilizers, extension and levelling jacks.

Note: For additional live load information, refer to Stageline technical department.

Dead Load Ground Support